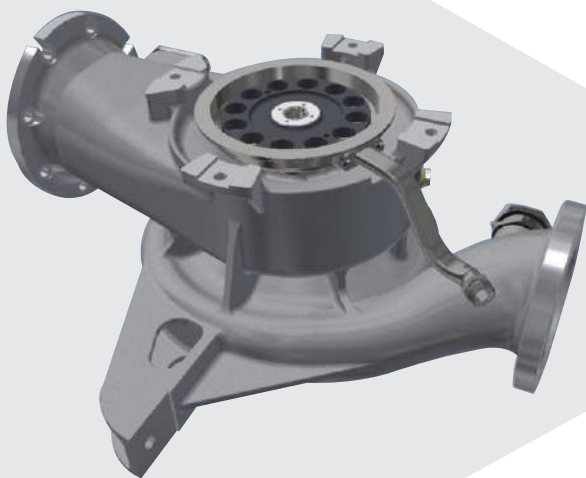




ARISE
PRECISION CASTING



Manufacture of all types of
Ferrous Casting

We, **Arise Precision Casting** are a leading manufacturer of INVESTMENT CASTING (Lost Wax Process). Our Investment Casting ultra-modern plant is established during year of 2017 in SHAPAR located at outskirts area of RAJKOT City (Gujarat) India.

With production capacity of 20 Tons of Lost Wax Investment Castings per month. Since then we have progressed exponentially and today the company produces 35 to 45 Tons of lost wax Investment Castings per month. Till now we have developed more than 1000 components applicable to a wide range of Industries.

This success and continuous growth was only possible because of our commitment to produce best quality Investment Castings with on time deliveries to our customers.

Today Arise Precision Casting has team of well qualified and professional team of engineers, technicians and workers to satisfy your needs.

Production Capacity of our plant is 950 Metric Tons / Annum.



VISION

We shall strive to be leaders in this business by offering products of a world class quality, and through constant technological innovation.

We understand the needs of our customers and shall stay focused on them by offering them products, service and solutions of the highest quality.



MISSION

To develop long-term business relations with its customers.

Poised to be Global Investment casting manufacturer.

To grow steadily and becoming profitable gradually.



OUR STRENGTH

On time Delivery.

Superior Investment Castings quality adhering to various standards.

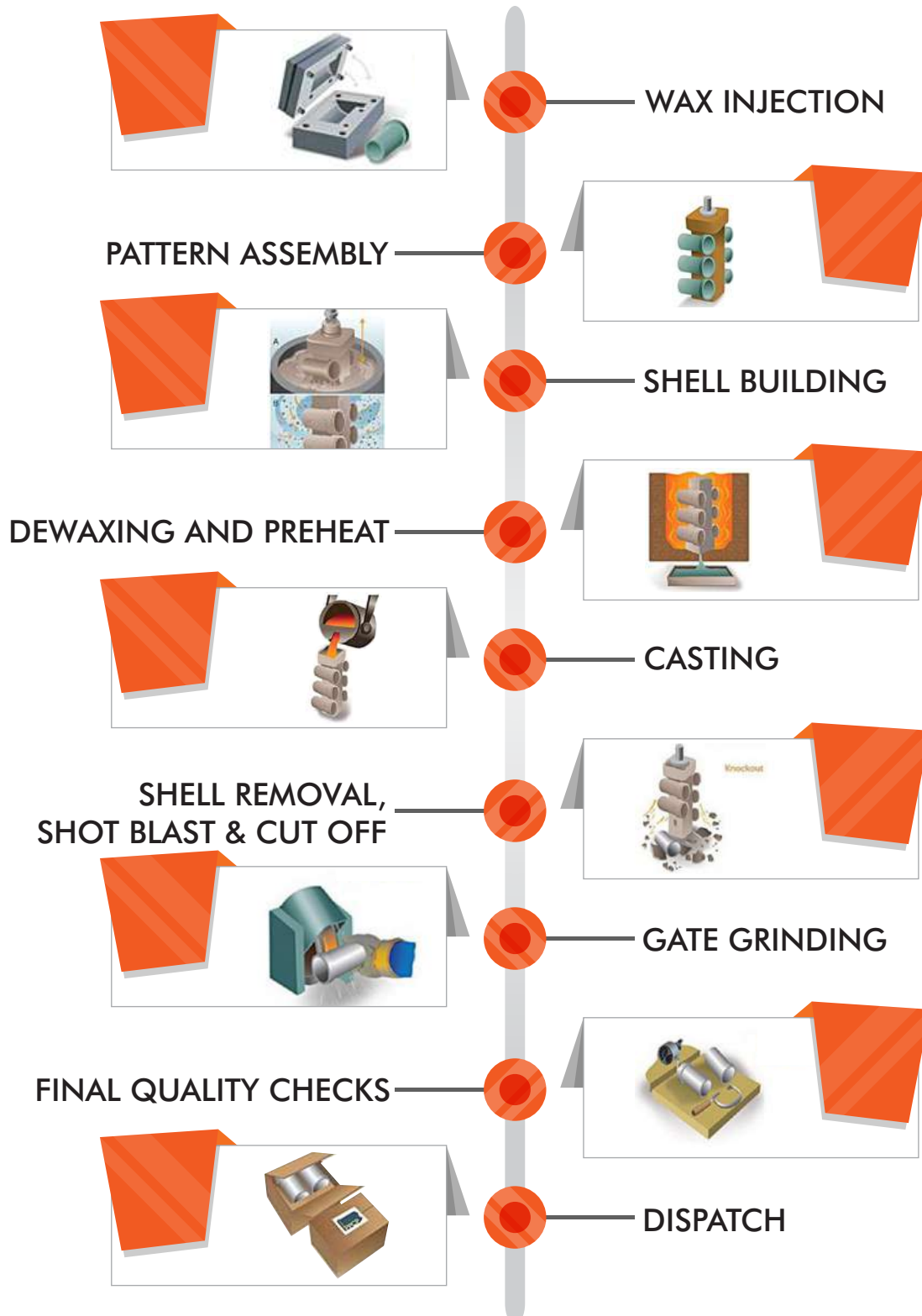
Flexibility in planning and development of Samples for approval.

Continuous training of our engineers and technicians for best efficiency and quality workmanship.



Process

The casting materials can be widely used and no limit to product shape as well as complex structure. Investment casting allows for closer tolerance control, lower or no machining allowance, and better surface finish. Also called lost wax casting, the process enables to improve the dimensional precision and surface finish, so as to meet the requirements of a higher level product.



Capabilities

Manufacturing Process	Investment Casting by Lost wax method.
Area of Land	5200 Sq. Meter
Build up Area	2885 Sq. Meter
Installed Capacity	80 MT / Month
Present Production	30 MT / Month
Weight Range	50 Grams to 120 Kg.
Min. Wall Thickness	3.00 mm
Surface Roughness	As Cast Ra 3.2 to 6.3 μ m Machined Ra μ m 0.5 (Min)
Quality Approval	ISO 9001:2015, P.E.D.(2014/68/EU) & AD 2000-Merkblatt W0

Materials Offered

Austenitic Stainless Steel	304/CF8/1.4308/1.4301,316/CF8M/1.4408,304L/CF3/1.4306, 316L/CF3M/1.4404/1.4409,CF8C/1.4827, CK20/1.4843, CN7M/1.4500, CG8M/1.4431 etc.
Carbon Steel	WCB/1.0619, WCC, LCB, LCC/1.1138, EN-8, EN-9, EN-36 etc.
Duplex Stainless Steel	1A, 2A, 3A, 2205/4A, 2507/5A, 6A, 7A, CF3MN/1.4435, CD4MCU, CG6MMN/1.3964 etc.
Ferritic Stainless Steel	430/CB30/1.4059 etc.
Low Carbon Steel	WC1/1.5419, WC4, WC5, WC6/1.7356, WC9/1.7379, Wc11, C5/1.7363, C12, C12A etc.
Martensitic Stainless Steel	410/CA15/1.4008, CA6NM-A/CA6NM-B/1.4313, 420/CA40/1.4028, 431, 440C etc.
Nickel Based Super Alloys	CW12MW, CW2M, CW6MC, Inconel, Monel, Hastelloy etc.

We can also offer other than above grades as per customer's specification meeting to any standards like:- ASTM, ASME, AISI, DIN, EN etc.

Quality Assurance

Quality Control and Standards

All our products would have quality control systems conforming to ISO 9001:2015 quality control systems and PED 97/23/EC Certified. Continual statistical process control and process capability improvement would be applied for all products manufacturing process. Our commitment to quality is second to none and we ensure in house QC using specialized techniques

Process of Physical Testing

- Universal Testing Machine.
- Hardness Testing Machine.
- Impact Testing Machine.

Chemical Analysis

- Spectrometer Test.
- Scrap Fitness Test.
- Specimen storage.

Miscellaneous Tests

Tensile Test, Impact Test, Radiography (X-Ray), Dye Penetrate, Corrosion Test, MPT Test;



Quality Policy

At Arise Precision Casting, the policy to succeed is through continuous improvements in process control and adopting latest Technology by time to time.

- To encourage continuous improvements.
- To support continual up gradation of quality systems.
- To provide the technical support to customer to design castings.
- To achieve total customer satisfaction by supplying quality products on time every time.

Certification



ISO 9001: 2015 (TUV SUD)



PED 97/23/EC (TUV RHEINLAND)

Application



Automotive Industries



Industrial Valves



Pump Industries



General Engineering



Mining Machinery



Steel & Power Plant



Aero Space Industries



Railway Industries



Defense Industries



Boiler Fittings



Diary Equipments-Machine



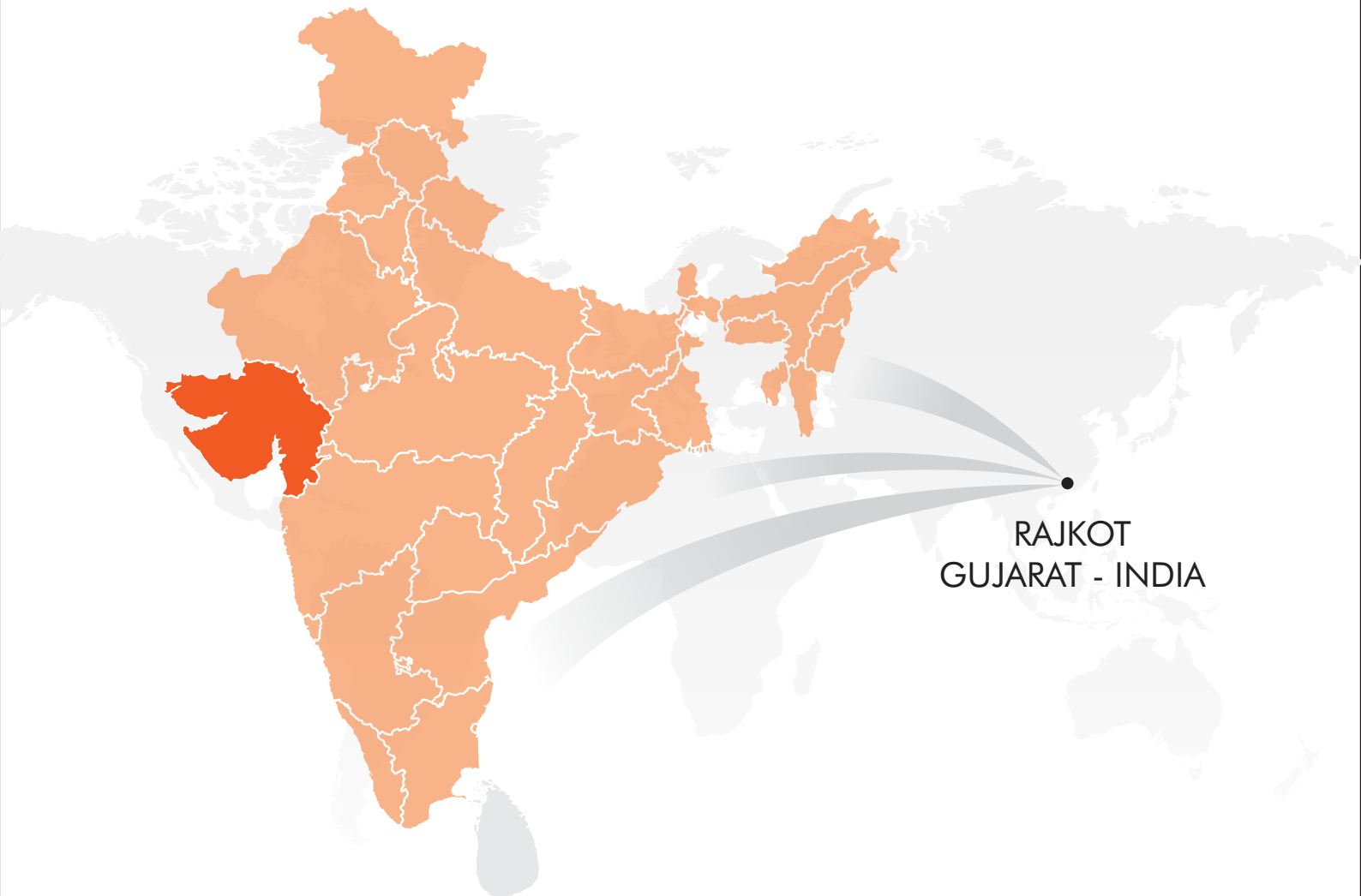
Earth Moving Machinery



Architectural Hardware

Product





RAJKOT
GUJARAT - INDIA

Contact Person : Jatin Panchasara
+91 97277 37533 | info@arisecasting.com

Registered Office:
Survey No. 215/P1, N.H. Ribada Chowkadi, Ribada Railway Station Road,
Near Ekta Weigh Bridge, Gundasara, Rajkot – 360311 (Gujarat) India.
info@arisecasting.com | www.arisecasting.com